

# Welcome to Han river Integrated Management & Operations Center



Han River Management & Operations Center



# **I . Han river restoration project**

**1. Overview**

**2. Status**

## Purpose

- Adapting Climate Change and promoting Green Growth
  - Flood control, Water quality improvement, ecological restoration

## Main Points

- (Flood Control) Dredging for Decreasing F.W.L.
- (Water Quality) Riverside Farmland Relocation, Quality Grade Up
- (Waterfront Construction) Bicycle roads 305km, Culture pavilion

Before (Yeoju Weir)



After (Yeoju Weir)



- **Dredging ( $50.3 \text{ m}^3$ , Avg. 0.2m)**

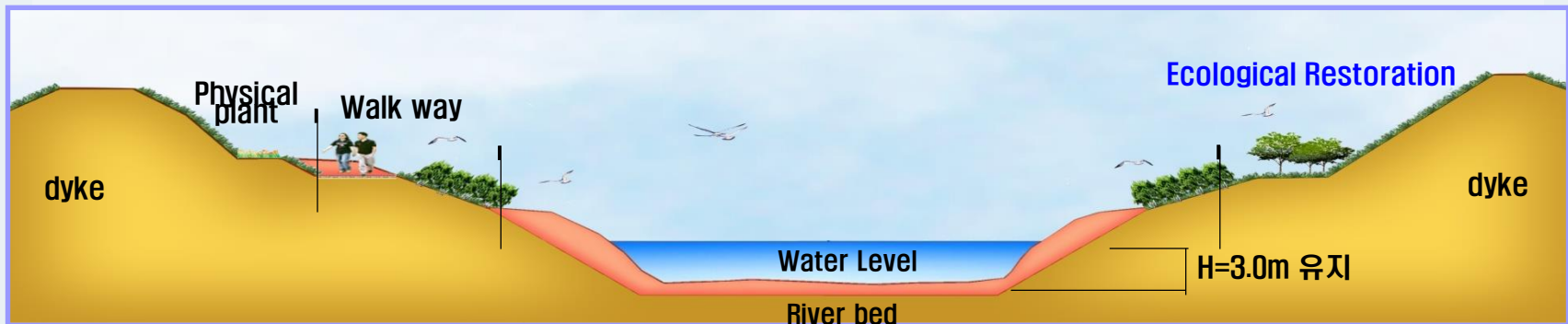
  - ⇒ **Decreasing F.W.L (max. 2.6m)**

- **Construct 3 Weirs**

  - ⇒ **Reserve water ( $34.3 \text{ mil m}^3$ )**

- **Riverside farmland relocation**

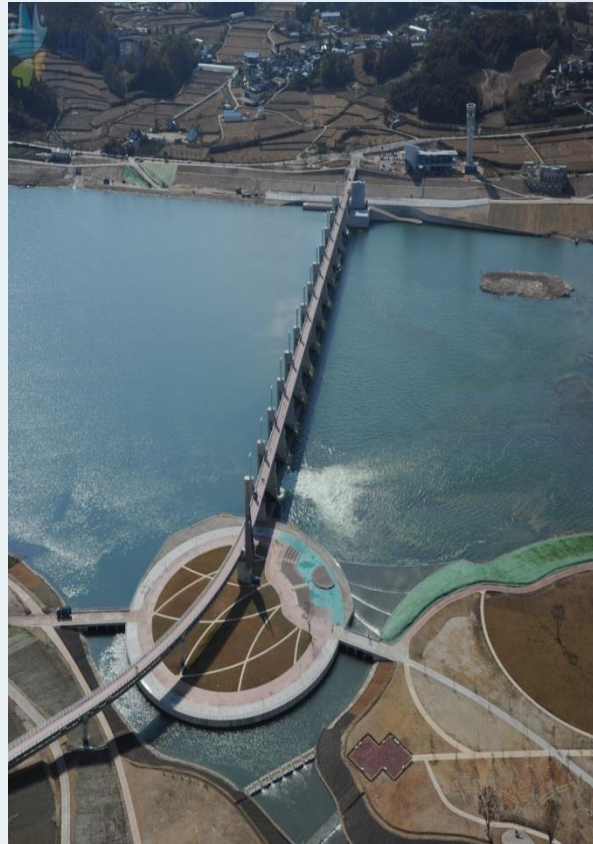
  - ⇒ **Water Quality improvement, Ecological restoration**



# View of 3 Weirs



**Gangcheon  
Weir**



**Yeosu  
Weir**



**Ipo  
Weir**



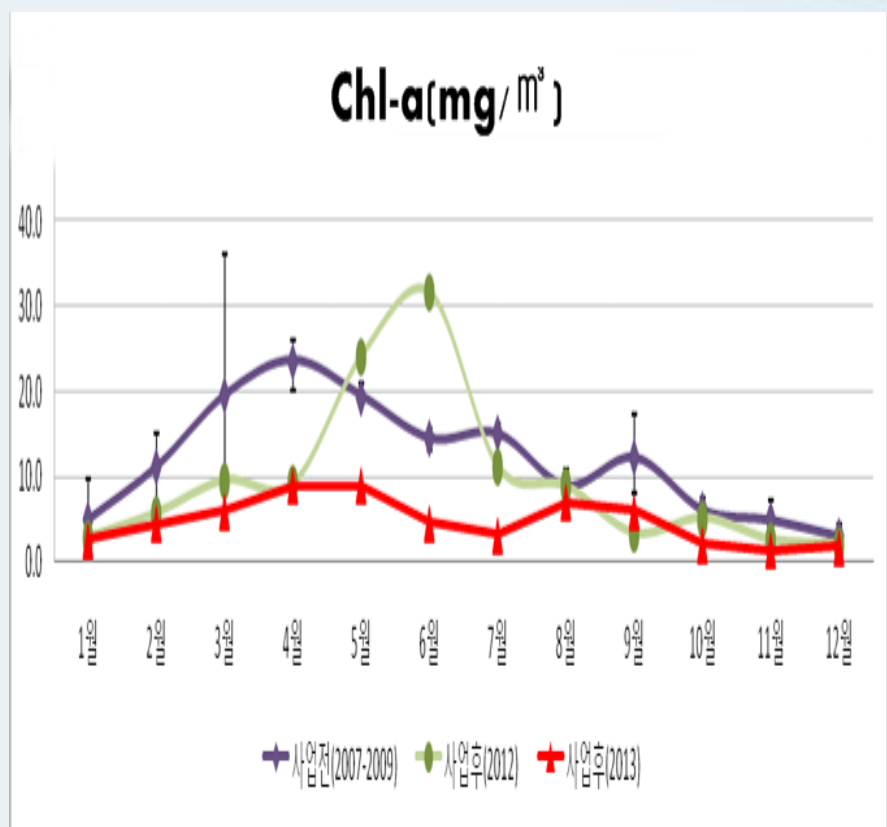
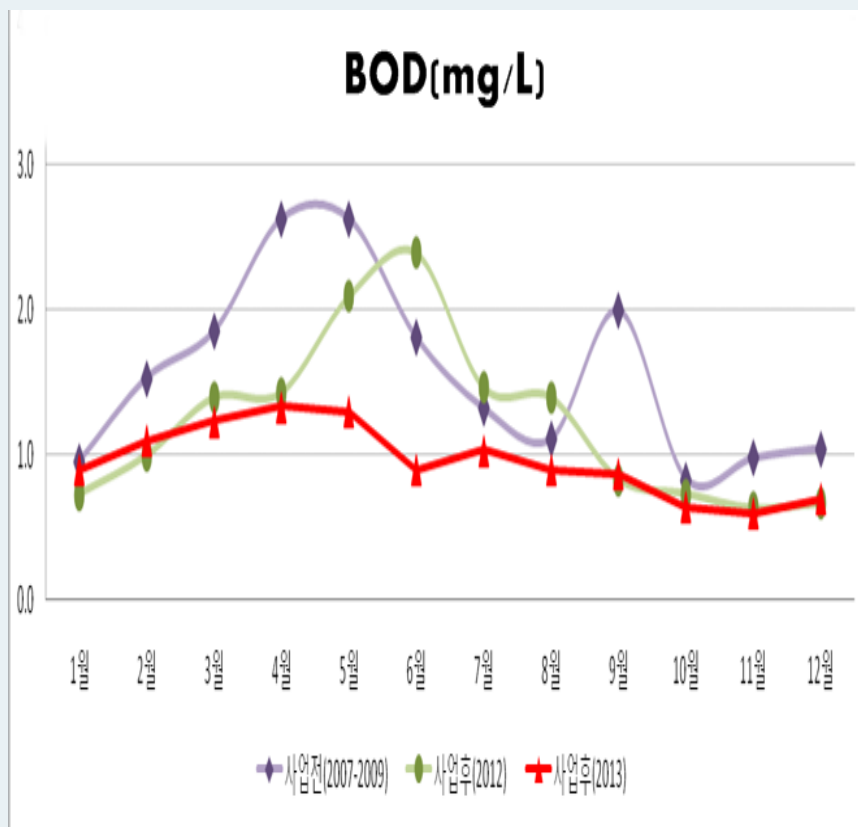
## **II. Weir Operation & Management**

- 1. Real-time monitoring system**
- 2. Water quality**
- 3. Cultural Landmark**

## **Real-time Remote Control Sys** between Weir – Center – H/Q ( Remote control of 3 of weir, gate and hydro power plant )



■ BOD is in good state, Algae was decreased after project



## ■ Current Status of Visitors

### ● [2013] 800 thousand people

\* Average daily visitors : Approximately 6,000 people on weekend / 2,000 people on weekday

## ■ Landmark for river culture

### ● Pursuing Landmark for river culture through various program

[Weekend program] Painting, Making etc. for local children and family.

[Seasonal program] Concert, Traditional play etc. for visitors



To make the happier world....

*Water, Nature and People*



**World leader in Water Management Service**